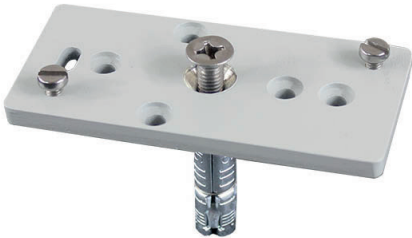


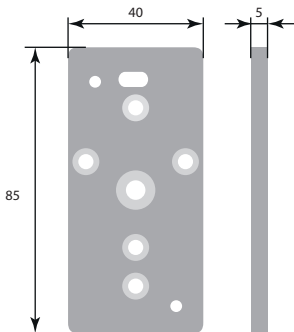
Instruction manual

MP 500



DESCRIPTION

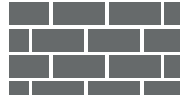
MP 500 is the mounting plate for application on brick and concrete walls or other hard surfaces. Includes 1 pc rawl expander M6x40mm in stainless steel, bolts 4x12mm - 2pcs and 50 mm long bolt - 1pc, which gives a larger detection range.



INSTALLATION

1. Choose destination place of your detector on a brick or concrete wall.

Brick surface

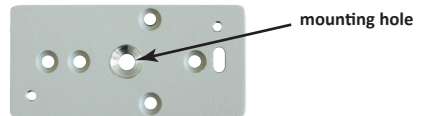


or

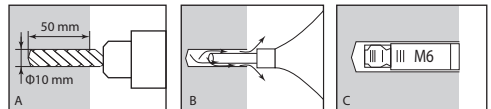
Concrete surface



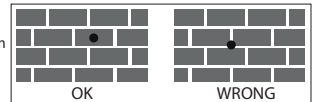
2. Align the plate in right position on the protected surface and mark the place of mounting hole (the biggest hole in the plate)



3. Drill a hole with a diameter of 10 mm, 50 mm deep (A)
4. Clean (B) the hole and insert the rawl expander (C)



Note! On a brick surface, you can get best detection range by drilling the hole in the middle of a brick.



5. Pass the necessary cables through the hole in the plate (D)
6. Screw tight the plate to the wall (E). Ensure that the plate is fixed.



7. Mount a detector to the plate using the bolts enclosed.

