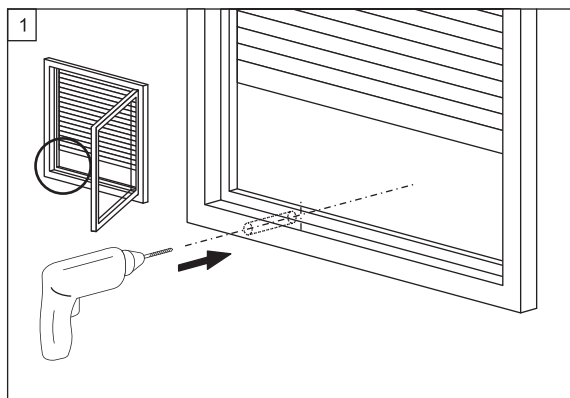
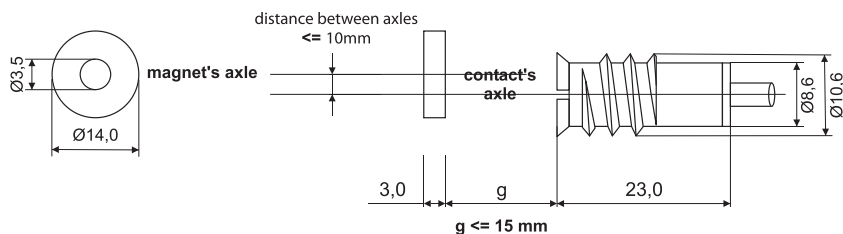
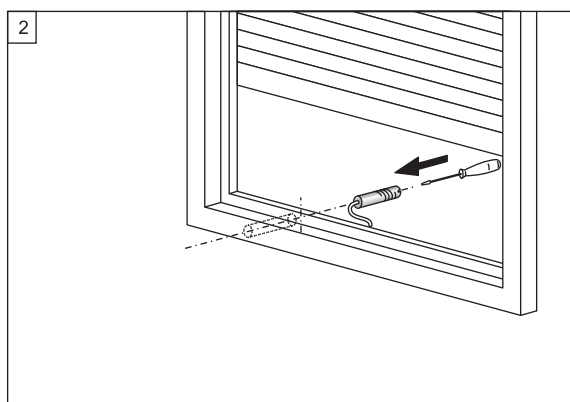


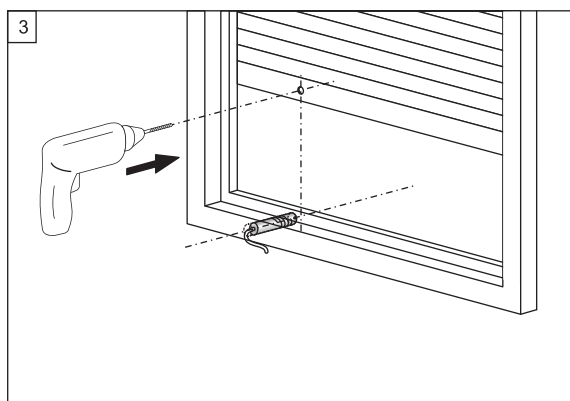
MC 250-M14



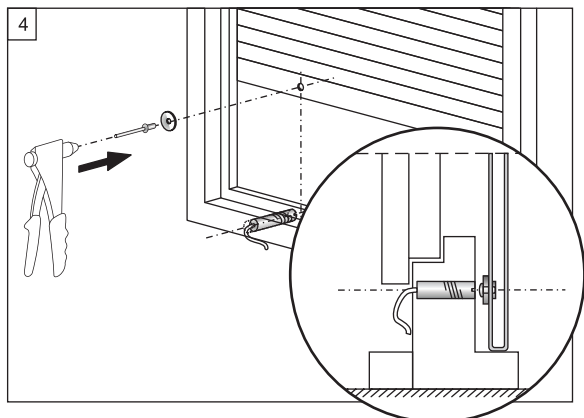
1. Select the place for the contact part at the base of frame. Drill the hole using a $\varnothing 9$ mm drill.



2. Screw the contact part into the hole.

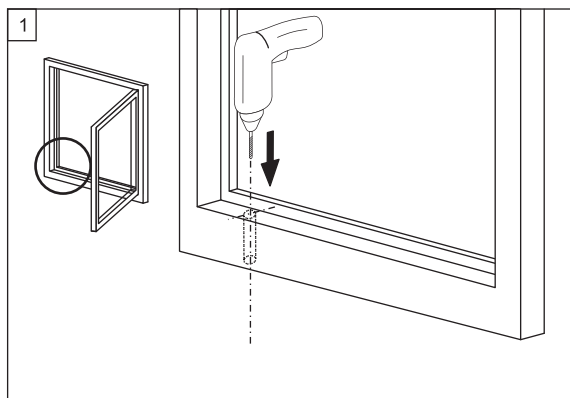
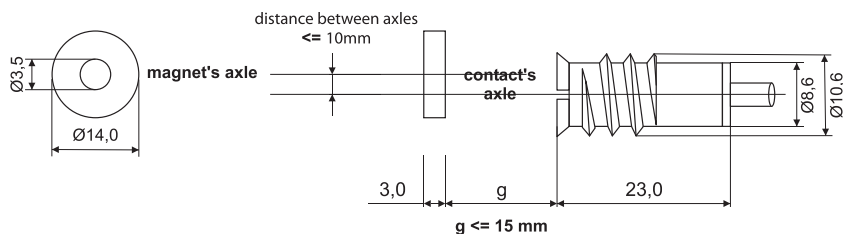


3. Select the place in the lower part of the roller blind for the round magnet. The place should be opposite to the installed contact part, when the rolling shutter is down. Drill a hole for rivet using a $\varnothing 3$ mm drill.

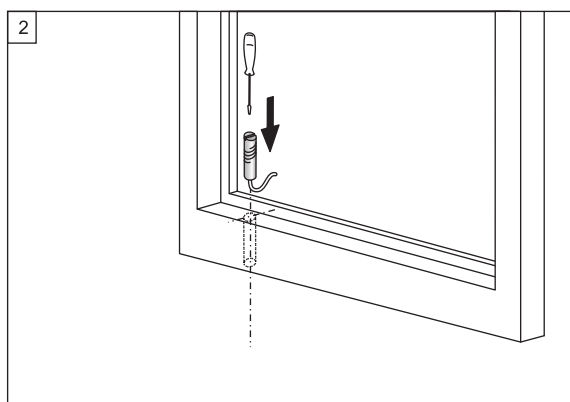


4. Fix the magnet into the roller blind by riveting. Correctly mounted the magnet should be situated on the line of the montage axis of the contact part. Maximum deviation of less than 9 mm. The gap between magnet and contact part is up to 15 mm. Connect the cable of the contact part to the alarm system and test the installation.

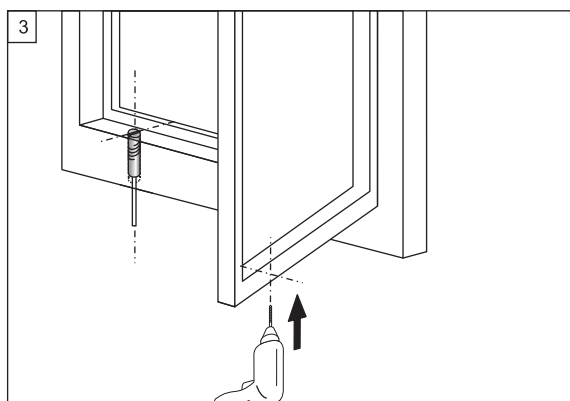
MC 250-M14



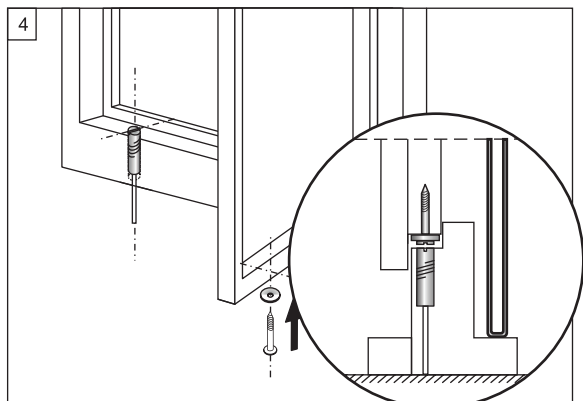
1. Select the place for the contact part at the base of frame. Drill the hole using a $\text{Ø} 9$ mm drill.



2. Screw the contact part into the hole.



3. Select a place for the round magnet underneath the window-frame. It should be drilled using a $\text{Ø} 3$ mm drill opposite to the installed contact part, when the window is closed.



4. Use the screw to fix the magnet into the hole. Correctly mounted the magnet and contact parts must be placed just opposite to each other with a maximum deviation of less than 10 mm. The gap between the two part is up to 15 mm. Connect the cable of the contact part to the alarm system and test the installation.