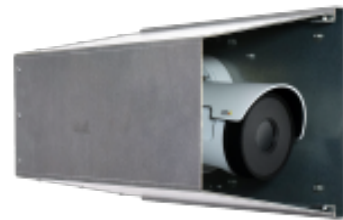


CHP 100

SECURE YOUR SECURITY CAMERA

Product :

Longueur boîtier (mm)	370
Hauteur boîtier (mm)	220
Diamètre de l'ouverture (mm)	Xx
Largeur de l'ouverture (mm)	150
Poids (kg)	2
Nombre de clefs (incluses)	2 pcs



Product description:

Active Camera Protection

Ordinary camera housings only protect against wind and weather.

In the case of theft and sabotage, at best, a so-called VideoLoss alarm, unfortunately with low priority.

The CHP-100 series prevents, delays, stops and alerts several different types of trials: shocks, bumps, breakage and disassembly.

All sensors are connected in an NC loop and are connected to a local burglar alarm that always has high priority.

In parallel, alarms can be connected to the camera's own alarm input.

CHP was originally designed to protect expensive thermal cameras but can also be used for other applications.

CHP-100 can be ordered with pre-mounted magnetic contact for Alarm type I, Alarm type II and III.