

3042

## DISTRIBUTION MODULE 2 x 1 &gt; 5 PAR

**Product :**

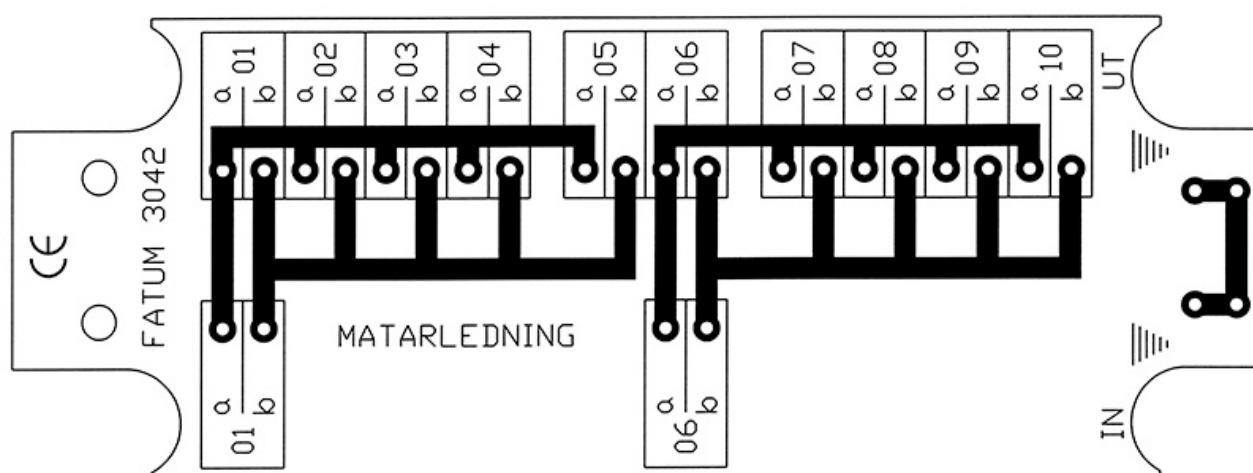
Section câblage - bornier LSA (mm)	Ø 0,4 - 0,7
Section câble - borniers	0,14 - 1 mm <sup>2</sup>
Tension d'entrée max.	60 V / 2 A
Protection anti-sabotage	No
Dimensions (L x l)	116 x 40

**Product description:****Terminal block for installation of tele and access systems.**






Distribution module with 2x 1 > 5 pair.

Distribution module with separate terminals for incoming cable, connected in parallel with separate terminals for outgoing cables. 2 pairs in and 2x5 pairs out, as well as 4 separate connections intended for cable shield.

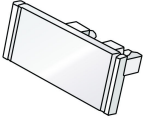

Available in different options, slot (LSA) or screw connection with lift function.



**Related products and accessories**

	<p><b>4101</b></p> <p>MODULE BOX PLASTIC WITH PLACE FOR 1 TERMINAL BLOCK</p>
	<p><b>4103</b></p> <p>MODULE BOX PLASTIC WITH PLACE FOR UP TO 3 TERMINAL BLOCKS</p>
	<p><b>2591.15</b></p> <p>TERMINAL SPACERS FOR MOUNTING OF OUR TERMINAL BLOCKS</p>
	<p><b>2591.18</b></p> <p>TERMINAL SPACERS FOR MOUNTING OF OUR TERMINAL BLOCKS</p>
	<p><b>2596.04</b></p> <p>TERMINAL SPACERS AS A COMPLEMENT TO ESMI- AND ERICSSON-BAR</p>

**Related products and accessories**

	<p><b>3131.01</b></p> <p>LABEL TERMINAL FOR EASY LABELING OF MODULE BLOCKS</p>
	<p><b>0501.01</b></p> <p>LSA TOOL FOR KRONE LSA PLUS CONTACTS</p>