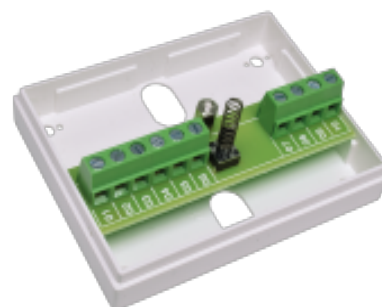


28110

## ALARM BOX "MINI" 10 POLES

**Product :**

Dimensions (L x l x h) mm	58 x 76 x 27
Section câble - borniers	0,14 - 1,5 mm <sup>2</sup>
Tension d'entrée max.	60 V / 2 A
Intensité autoprotection max.	50 mA
Protection anti-sabotage	Yes

**Product description:****Complete junction box for installation of alarm and access systems.**

Anti-tampering protected junction box with 10 single pole terminals.

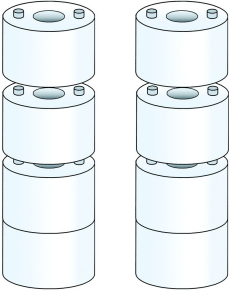
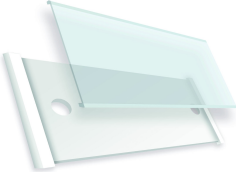

The terminal block is adapted to easily connect peripherals such as Alarmtech's magnetic contacts and glass break detectors.

The terminal block has 10 connections, 2 of which are intended for anti-tamper switch connection.

The box is flame-retardant according to UL 94 V-0.

The terminal has up to 1.5 mm<sup>2</sup> screw connection with elevator function.

**Related products and accessories**

	<p><b>2581.06</b></p> <p>STACKABLE WALL SPACERS FOR EASY WIRING IN BOX</p>
	<p><b>3132.01</b></p> <p>WALL LABEL FOR EASY LABELING</p>
	<p><b>1901.12</b></p> <p>SPARE SPRINGS TO FATUM-SERIES</p>