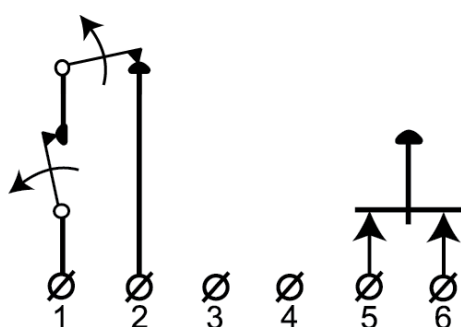


MC 470

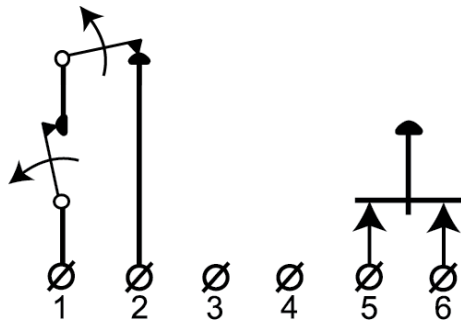
High Security Contact,
Surface mount, NC

Technical data

Installation method	Surface mount
Contact function	Normally Closed (NC)
Approvals	EN 50131-2-6 Grade 3, Class II, INCERT B-582-1003, SBSC 9-201, Class 3/4, F&P Danmark, FG, NBÜ CZ Typ 3, NBÜ SK Typ 3, NF&A2P
Contact rating	48 VDC / 500 mA / 10 VA
Magnet type	Alnico 5
Mounting on steel	Only with accessories
Make distance (wood) mm	27
Make distance (steel) mm	10
Connection	Screw terminals
Housing material	ABS Plastic
Operating temperature range	-40°C - +70°C
Housing protection class	IP 43
Contact dimensions (L x W x H) mm	65 x 20 x 15
Magnet dimensions (L x W x H) mm	65 x 14 x 10
Normal operation	12 VDC
Grade	3



MC 470 is a surface mount high security contact with NC function with 6 screw connections and sabotage contact. The contact is specially designed for use in banks, museums, art galleries, stores, etc. It has screw terminals with wire protection and a sabotage contact. Enclosed are plastic spacers for installation on steel. The contact can be supplemented with different accessories such as brackets and extra strong magnets.

**ORDERING INFORMATION**

Model	Description
MC 470	High security contact, NC, surface mount