

## MC 300-S22

Snap-in Flange with Strong Magnet  
for MC 340, 346, 347

## Technical data

Installation method	Recessed mounting
Drill diameter mm	25
Housing material	ABS Plastic
Colour	White
Dimensions (L x Ø) mm	20 x 30

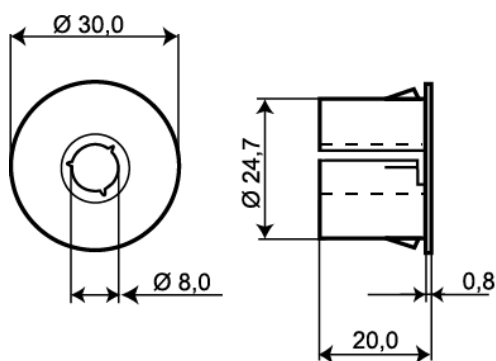


Plastic adapter with extra strong magnet for installation of recessed magnetic contacts in door and window frames of steel or in spaces where greater operation gap is required.

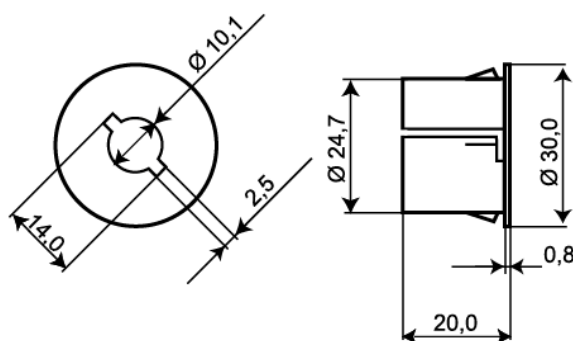
Suitable for MC 340, 346 and 347.

The contact is pressed into the adapter.

With snap-in function for two different dimensions, 1 mm and 1.5 mm.



contact



magnet

