

IU 370

Interface unit for GD 330/ GD 370/ GD 470

Technical data

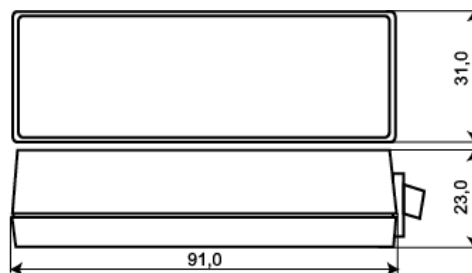
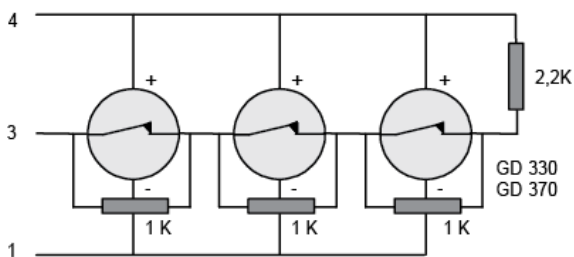
Supply voltage	10-15 VDC
Current consumption	16 mA (19 mA in alarm state)
Alarm output	Relay, NC
Contact rating	35 VDC / 100 mA
Alarm indication	LED
Tamper protection	Yes
Alarm hold time	2 sec / Latching
Alarm reset	Power down / Remotely / Manual
Connection	Screw terminals
Housing material	Metal
Colour	Grey
Operating temperature range	-40 to +50°C
Housing protection class	IP 41
Dimensions (L x W x H) mm	92 x 31 x 23



The IU 370 is an analyser and relay unit, used to connect the GD 330, GD 370 and GD 470 glass break detectors to a control panel. Up to 10 detectors (max. 8 GD 470) can be connected to an analyzer unit.

IU 370 monitors resistance changes in a balanced circuit. It is possible to program it for either manual reset (Latch) or auto-reset after two seconds.

Note: An alarm from a single detector activates the alarm relay on the unit.



ORDERING INFORMATION

Model	Description
IU 370	Analyser unit for GD 330/ GD 370/ GD 470, white plastic housing
IU 370-M	Analyser unit for GD 330/ GD 370/ GD 470, grey metal housing