

# GD 335-S

## Glass Break Detector, Glued



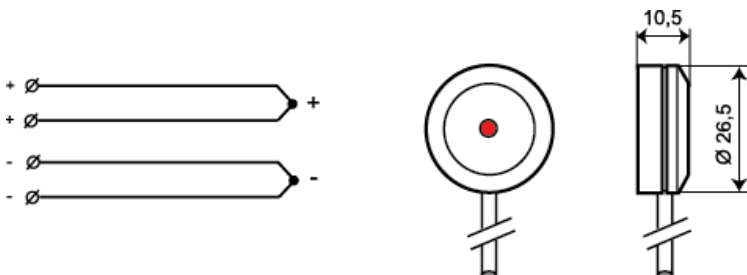
### Technical data

Maximum coverage	2 m radius (standard 3 mm glass)
Approvals	EN 50131-2-7-2:2013 Grade 2, VdS class B - G192532, SBSC 10-32, Class 2
Supply voltage	5-15 VDC
Current consumption	5 $\mu$ A (7.5 mA in alarm state)
Alarm output	Transistor
Alarm indication	LED
Tamper protection	Yes
Alarm hold time	Latching
Alarm reset	Power down
Connection	Cable / Screw terminals
Housing material	ABS Plastic
Colour	White
Operating temperature range	-40 to +70°C
Housing protection class	IP 67
Dimensions (L x W x H) mm	91 x 31 x 23
Dimensions (L x $\emptyset$ ) mm	11 x 27



The GD 335-S has the same features as the GD 335 with transistor output and can be directly connected to a control panel via the junction box JB 103-4. The detector has a coiled cable with modular connector that plugs into the junction box JB 103-4, which allows it to be quickly and easily disconnected from the detector loop when, for example, cleaning windows.

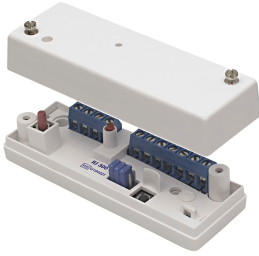
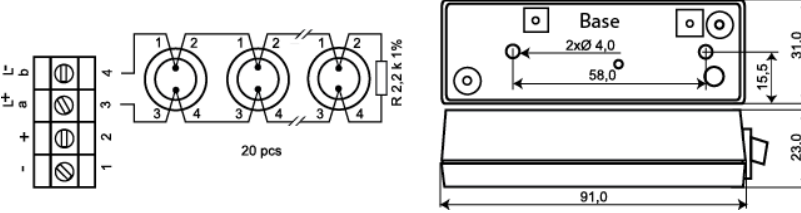




**For laminated glass use GD 475.**

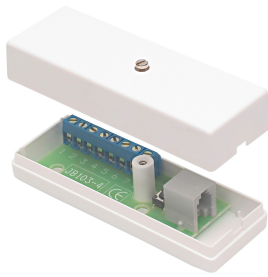


### ORDERING INFORMATION

Model	Description
GD 335-S	Glass break detector with transistor output, glued, coiled cable with 4-pin modular connector plug
GD 335-SJ	Glass break detector with transistor output, glued coiled cable with 4-pin modular connector plug and junction box JB 103-4

Related products and accessories

	<p><b>IU 300</b> Interface unit for GD 335 and GD 375</p>	
	<p><b>CG 100</b> Cable Conduit</p>	
	<p><b>GDK 100</b> Adhesive Kit</p>	
	<p><b>GVT 500</b> <b>DISCONTINUED</b> - Replaced by <a href="#">GVT 5000</a> Test unit for GD 300/GD 400 Glass Break Detectors.</p>	
	<p><b>GVT 5000</b> Test Unit for Glass Break and Vibration Detectors</p>	

**Related products and accessories****JB 103-4**

Junction box for  
GD 335-S, GD  
375-S or GD  
475-S