

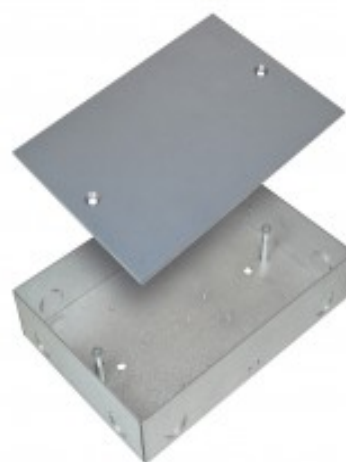
WB 500

DISCONTINUED - Replaced by VD 501

Recess Box for wall mounting for VD 500

Technical data

Housing material	Metal
Dimensions (L x W x H) mm	220 x 155 x 52



Recess box for wall mounting made of special steel (Magnelis) for mounting the VD 500 in concrete or in other hard surfaces. It is also adapted to be embedded in the wall.

The box is attached with supplied expansion bolts that provide a large detection range but also to level the box during assembly. The box has threaded holes for VD 500 and for mounting a connection box Fatum 28016.03. There are also ready-made „knockout holes” for a conduit pipe which makes installation easier. The box is equipped with an opening contact in order to provide extra security.